

993 mirrors

1 white

2 Brown

3 Blue

4 Brown

5 Red

6 BLK

964 Conversations

Red wire as pin ①
loops into Red/white wire

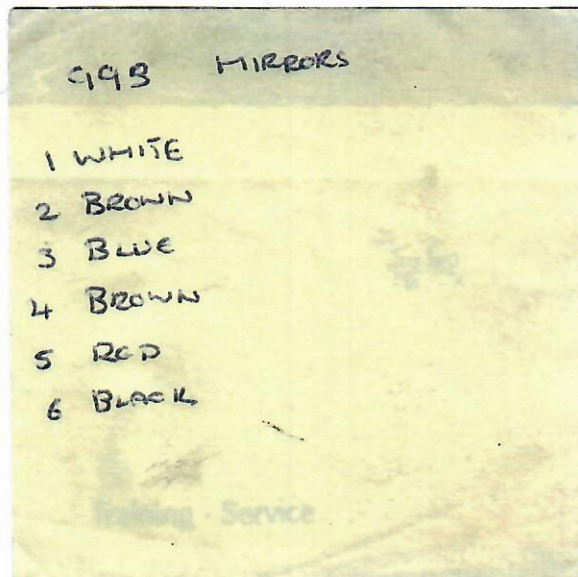
Contact Assignment and Wire Colors for the 6 and 15-Pin Mirror Plugs

Socket Contact housing 15-pin	Socket Contact housing 6-pin	Wire color	Function
1		Not in use	
2		Purple	Temperature sensor
3		Not in use	
4		Purple	Temperature sensor
5		Not in use	
6		Yellow	Potentiometer 1 (wiper)
7		Green	Potentiometer +
8		Gray	Potentiometer 2 (wiper)
9		Pink	Potentiometer -
10	6	Black	Motor 1 (↑ +)
11	1	White	Motor 2
12	2	Brown	Heating
13	5	Red	Motor 1
14	3	Blue	Motor 2 (→ +)
15	4	Brown	Heating

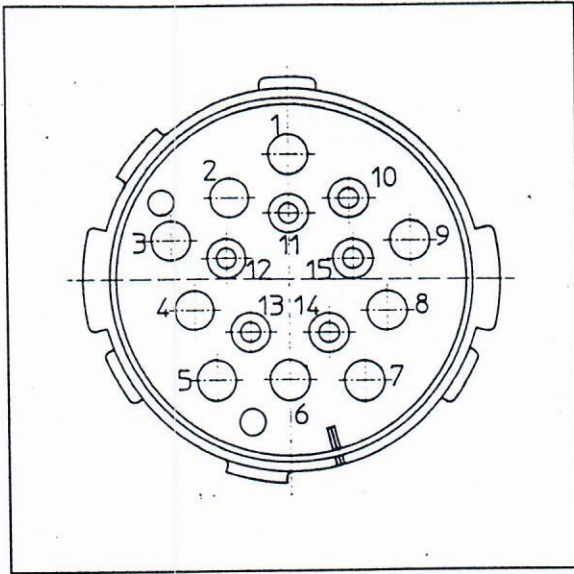
993 MIRRORS

964 CONVERSION

PIN 1 = RED
 " 2 = BROWN
 " 3 = BLUE
 " 4 = BROWN
 " 5 = RED
 " 6 = BLACK

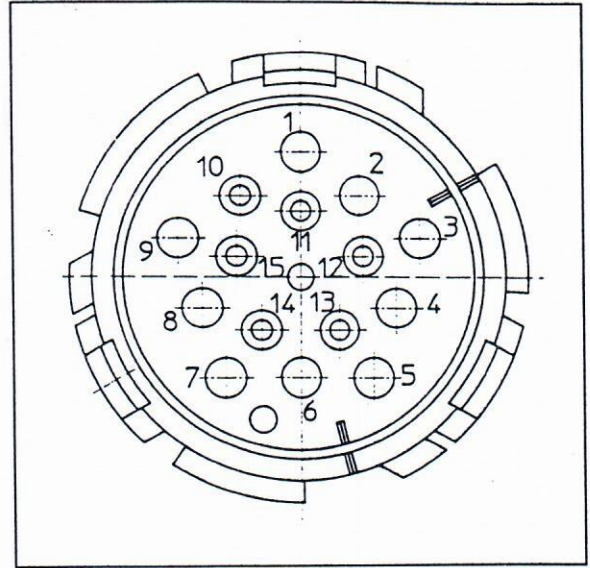


15-Pin Plug



017a

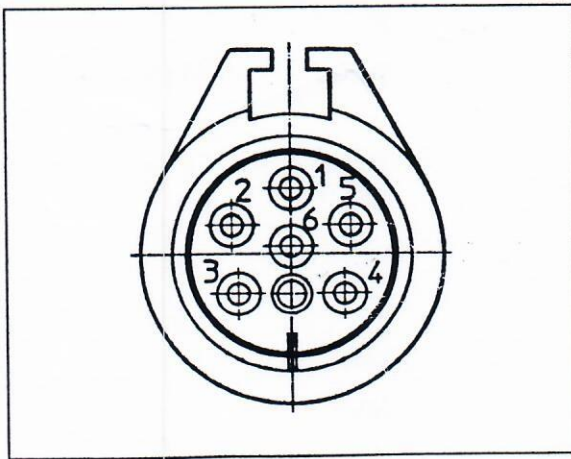
Contact-pin end (insulating cushion)



017b

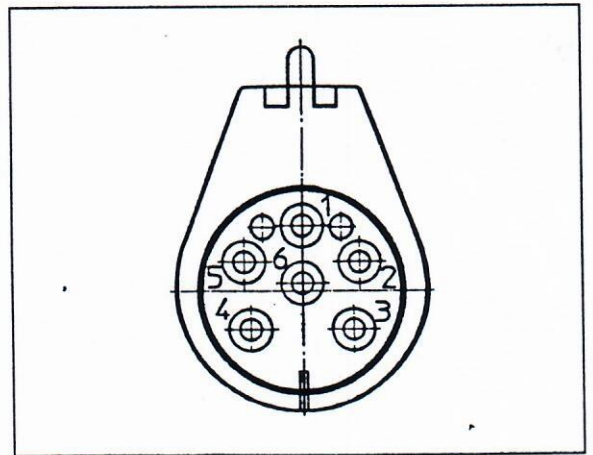
Contact sleeve end (insulating cushion)

6-Pin Plug



018a

Contact-pin end (insulating cushion)



018b

Contact sleeve end (insulating cushion)