

DESIGN 911

Centre for Porsche

Installation Instructions

Door Pockets Porsche 911 '69-'73



Before you begin

The installation of your door pockets in itself is relatively straight forward. However to get a perfect fit some (time-consuming) adjustments may be required. Count on 4 to 6 hours to install the 4 door pockets. You may want to print of these installation instructions or have them opened on your (portable) PC in your work area.

You will need following tools:

- Metric ratchets (for M6, M8)
- Metric spanners (for M6, M8)
- Screwdrivers (flat and Phillips)
- Riveting tool
- Scissors and Stanley knife
- Ballpoint pen and masking tape
- Drill
- Heat gun/ Paint stripper (if necessary)

You will need the following installation kit:

- 1m high strength (braided) elastic bands (5 mm thick)
- 8 Rivets
- 8 plastic hinges
- 16 screws M4 (12-16mm long)
- 1 Allen bolt M6 (16-20mm long) and 1 nut M6
- 6 few wooden clothespins (if necessary)

Removing your old door pockets

Rear pockets

1. Open the long rear door pocket and unclip it from the door pocket slide.
2. Remove the small plastic clip holding the elastic band. If you have no clip, untie the nut in the elastic band. The door pocket will now fall open.
3. Use the paint stripper to warm up the plastic hinges until then are warm to the touch (30-40°C). This will make them more flexible and less likely to break as you push the door pocket down to gain access to the hinge screws.
4. Unscrew the hinges from the door.
5. The long rear door pocket can now be removed

Front pockets

6. Remove the forward most Allen bolt
7. Reach through the door panel opening to remove the nut
8. The front door pocket will now fall open.
9. If you are replacing the hinges, use a drill to remove the rivets.
10. Unscrew the hinges from the door.
11. The long front door pocket can now be removed



Installing your new door pockets

The installation of your door pockets in itself is relatively straight forward (reverse the dismantling procedure). However to get a perfect fit some adjustments may be required. The remainder of these instructions focus on these adjustment possibilities. Depending on how your armrests have aged they may or may not be applicable to your case.

Front pocket adjustment and installation

1. If you keep your old door panels you will want to make sure that your new door pocket will sit exactly in the same place as the old one. This will avoid the impression from the old front door pocket (at the front) to become visible.
2. Try-fit the door pocket on the door panel and align it with the old impressions. Use a pen to mark where you want to drill the hole. To avoid the vinyl from getting torn up by the drill it is a good idea to press a washer on the vinyl when drilling.



3. Although the front pockets are supplied with hinges, We usually do not install them as they do not serve any purpose. Furthermore, we feel the hinges distract from the elegant shape of the door pocket. If you do want to install them please refer to the installation of the rear pockets for guidance.

Rear pocket adjustment

The quality of fit crucially depends on how the upper edge of the door pockets aligns with the arm rest. Due to de-vulcanisation and age, most armrests have shrunk (moved up) or no longer have their original shape. As a result door pockets may need to be reshaped and the door handle repositioned for an optimal fit.

Gap between door pocket and armrest too big (armrest seems to high)

Due to de-vulcanisation and age, most armrests have shrunk. Due to the fixed attachment point under the door upper the armrest has moved up, sometimes by as much as 1cm.

1. First remove the armrest from the door. To do this remove the front and rear screws holding the door upper to the door. Then remove the door opener connecting clip (picture). You can now remove the Allen bolts holding the armrest to the door.



2. If it is just 2mm or so you would like to gain, you can simply use a file to enlarge the attachment holes. If you need more you can decide to move the door handle attachment plate up. To do so, drill out the rivets. Make a small extension plate to get the desired extension. Do not extend by more than 10mm. Rivet the extension to the door handle. Then rivet the door handle attachment plate onto the extension.



3. Re-install the armrest and try-fit the door pocket again. If the gap is still too big you can consider the trick with the clothespins. The clothespins can serve as a wedge between the door and the armrest.
4. You will want to position the wedges on the door along the upper edge of the armrest. To position simply use a marker and use 2-sided tape to tack into place. When you screw it into place the clothespins will change the angle of the armrest and push the outside 2-5mm lower.



Door pocket does not follow curve of the armrest (armrest seems the wrong shape)

1. Due to de-vulcanisation, exposure to the sun and age, some armrests may have warped. Even if your armrest seems fine, the door pocket may not perfectly follow the shape of the door/door panel. In each of these cases you can adapt the shape using the thermoplastic properties of your fibreglass door pockets.
2. Carefully assess how you want to reshape (mostly torsion) the door pocket. Create a set-up where you can apply moderate force to obtain the shape you want once the door pocket reaches a moderate thermoplastic state.
3. Now warm up the door pocket by blowing hot air into it. Be careful not to get too close or make the surface too hot (max 60-70°C). It is better to try a few times gradually making it warmer then to 'go for broke'. Once you have reached the right temperature, put the gun to the side and apply moderate force towards the desired shape. Allow to cool down while holding. It is OK to overshoot the target shape slightly to get the right shape upon release. Again don't overdo it. Patience is a virtue.



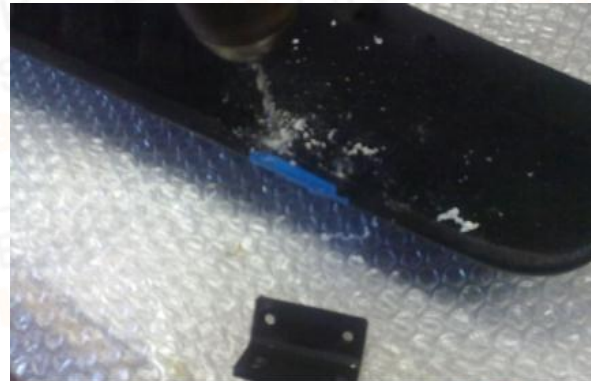
When you are happy with the fit you can proceed with the installation.

Rear pocket adjustment and installation

To install you basically reverse the dismantling procedure. A few attention points below.

1. Use the paint stripper to warm up the plastic hinges until then are warm to the touch (30-40°C). You can now fold them without risk of breaking.

2. Screw the hinges into place.
3. Now apply some masking tape to the door pocket in the area where you want to attach the hinge.
4. Position the door pocket the way you want to have it and use a pen to mark the position of both hinges on the door pocket.
5. You can now drill the holes and rivet the hinges into place.
6. With the rivets installed screw the door pocket to the door panel.



7. Proceed by installing the elastic strap. To do so tie a nut into the strap and guide it through the adjustment plate and back through the strap hole in the armrest. Stretch the elastic band firmly and use a 'vise-grip' or similar locking pliers to hold into stretched position.
8. You can now tie the second nut close to the 'vise-grip'. When you release the 'vise-grip' your elastic band should have a good residual tension to ensure nice and tight closing action of the door pocket.



The result should look like this:

